

---

# Asset Manager's Report – April 2007

---



## Water/Wastewater

### Asset Valuation and Asset Management Plans for water & wastewater

The revaluation of the water and wastewater assets and the update of Asset Management Plans (AMPs) for these facilities are now due. The valuation is to be as at the 30<sup>th</sup> of June 2007 and the AMPs are to follow shortly thereafter. Proposals for the assignment are being sought from reputable consulting firms with expertise in this field.

### Combined meeting of the RWS Chairmen

A combined meeting for the RWS Chairmen is planned for 4pm on 18th April 2007.

### Wastewater

#### Urban Sewer Network

The sewer network did not have any major problems during the month.

#### Wastewater Plant

E-Can monitoring officers visited the wastewater treatment plant on 3rd April 2007, to collect water samples and to discuss monitoring and reporting procedures to be followed. E-Can is generally satisfied with the performance and maintenance of the wastewater treatment plant, with only minor issues of non-compliance being indicated in their latest consent-monitoring reports. One of the proposed additional monitoring requirements is that a flow meter is to be installed at the treatment pond to measure the daily inflow, which is a condition as per the resource consent but is not being followed.

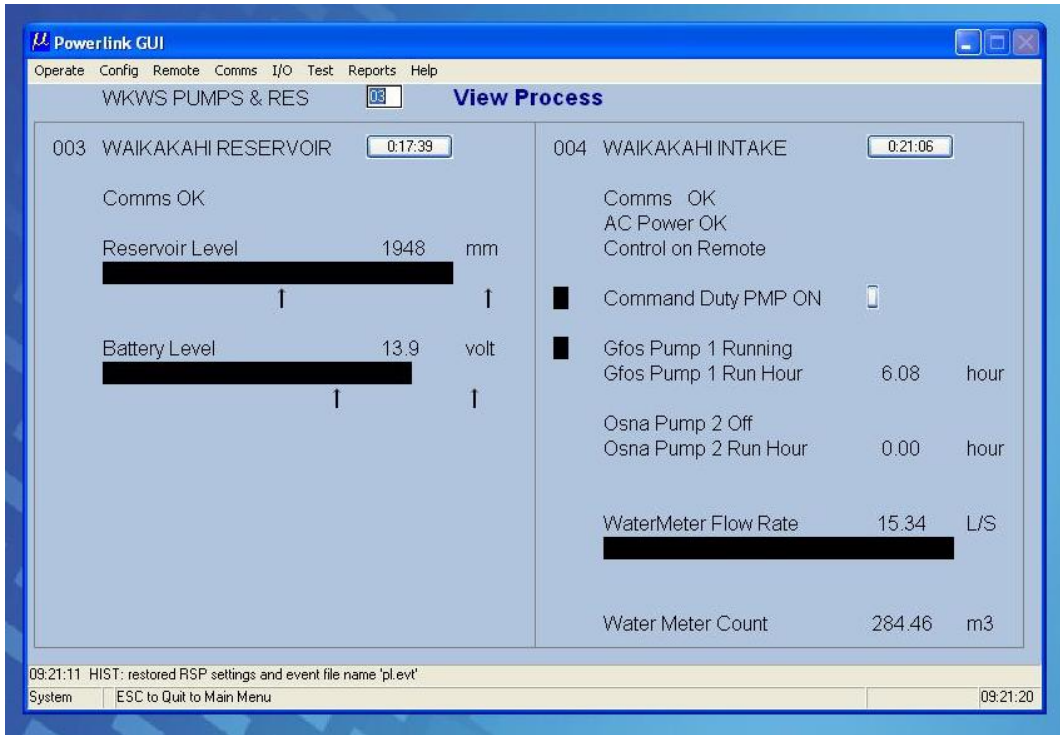
The plant continued to function satisfactorily, with effluent irrigation to the disposal fields continued as usual.

### Water Schemes

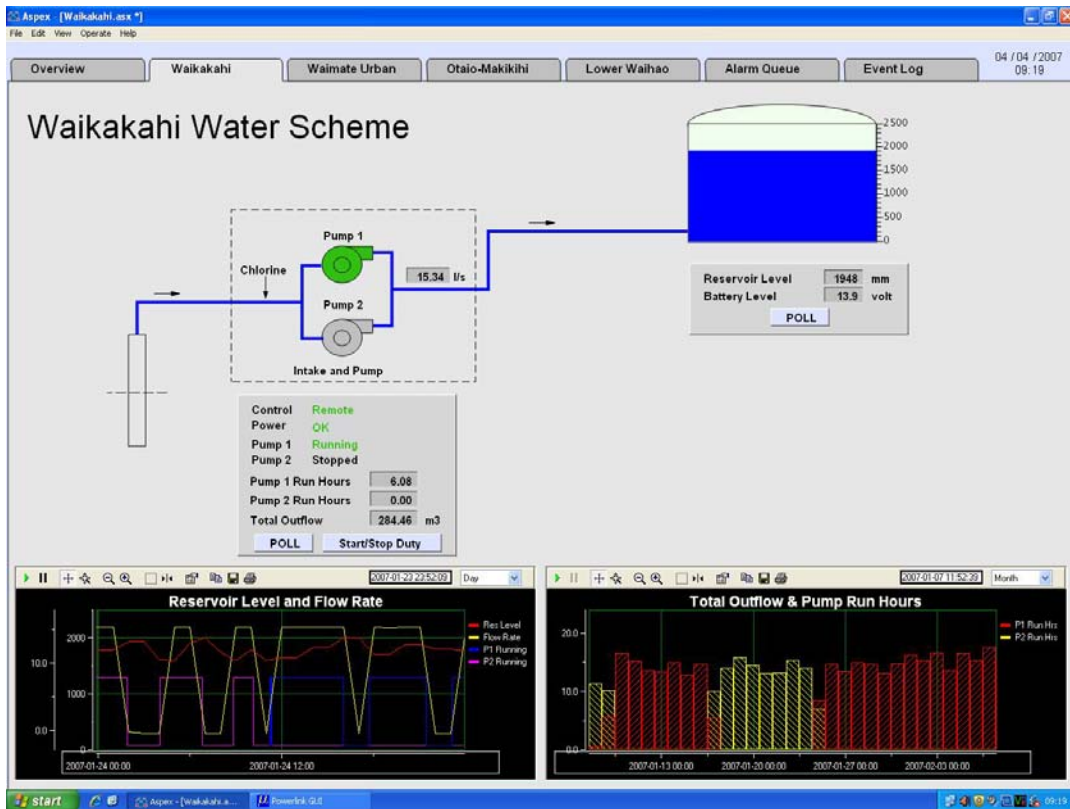
#### SCADA Upgrade

The Supervisory Control and Data Acquisition (SCADA) system enables the remote monitoring and automated control of the pumping stations and reservoirs connected to it. Currently, the Council has three of the six rural water schemes plus the urban scheme linked to a SCADA system. This early generation system was installed some 9 years ago, and an overdue upgrade of the hardware and software is now being undertaken. A new computer and the latest Aspex software, that can provide a lot more user-friendly information, is now installed at the control station in the Local Government Centre. The following two images give a comparison of the front-end screens of the previous PowerLink vs the new Aspex software.

The addition of new sites and the upgrade of the existing sites to utilise the full potential of the new facility, will be carried out over the next few months.



Old PowerLink Screen for the Waikakahi Scheme



New Apex screen for the Waikakahi Scheme

## Urban Water Scheme

The urban water scheme functioned trouble-free during December 2006 and January 2007.

Water consumption within the urban zone remains to be moderate, with the use of the Timaru Road bore not required on most days.

## Rural Water Schemes

### **Cannington-Motukaika**

No major problems were reported in water quality or the distribution network.

### **Hook Waituna**

The scheme remained trouble-free during the month. All water samples were OK.

### **Lower Waihao**

There were a few recurring leaks in the gravity main from the reservoir, resulting in the disruption of distribution.

The electronic starter for the main pump at the intake was burned out, with the likely cause being a lightning strike. A new Variable Speed Drive, that provides greater efficiency in power usage, was installed to replace the starter.

### **Otaio-Makikihi**

The network and all water samples were OK during the month for the scheme.

### **Waihaorunga**

The submersible pump at the main intake at Waihaorunga is worn out and beyond repair. The scheme is on a stand-by pump now, until a new pump is purchased and installed.

All water samples tested were OK.

### **Waikakahi**

On the 21st of March 2007 the Waikakahi water scheme committee was briefed about the progress of the work related to the proposed scheme upgrade with the Lower Waihao link. The installation of pipe for the new rising main has started, and the project is expected to be completed by early May 2007, as planned.

The network and water samples were OK during the month.

### **Downlands**

Our Downlands Committee representative has advised that we need to address the issue of the replacement bylaw pertaining to the RWS in the next while.

Timaru District Council has forwarded Chapter 7 of their proposed By-law pertaining to Water Services, noting that Parts 1 and 3 cover the rural supplies component intended as the proposed replacement of the Downlands Bylaw.

Timaru DC Asset Manager advised as follows: -

*"In mid to late 2006 we prepared and consulted via the Special Consultative Procedure (SCP) on a new Chapter 7 of our Bylaws. Our new Chapter 7 covers all 3 water services, and has strong enforcement provisions which were prepared with legal advice. This chapter applies to the whole of the Timaru District and does NOT exclude Downlands. The current Downlands Bylaw is still in force, and we do NOT know who can revoke this---presumably TDC can do this for the TDC area, however it expires 30/06/2008 in any event.*

*As a way forward, we think Waimate and Mackenzie need to promulgate a new Water Bylaw for the Downlands Water Scheme in each of their Districts. We strongly believe that for consistency it must be the same as the TDC Chapter 7. (You could also use our Chapter 7 for all your other systems if you want, however this is entirely your call). "*

All bylaws under any Council umbrella must be reviewed by 30 June 2008 or they will expire, and hence it seems that this has been the logical option for Timaru DC to take. There are a number of steps that must be undertaken in terms of Local Government Act 2002 processes before the draft can be formally introduced, including an assessment in terms of the appropriateness of the bylaw as per Section 155, as well as public consultation, and adoption by Council.

## Roading

### Work Completed

#### Drainage

Pareora Gorge concrete channel construction.

#### Culvert Replacement- Backline Road

Parkers Bush Road installed 4m gabion basket in Lundons Gorge section to stabilise the stream bank.

Evans Crossing ford, minor concrete repairs

#### Bridge Handrail Painting

Church Hill Bridge, Peters Creek Bridge

#### Seal Widening

Lower Hook Road (Hook School Rd to D'Auvergues 0.7km)

#### Curve Improvement

Byrnes Road extension of seal around bend for 50m at existing seal end.

#### Sign Replacement

William Street / Dobson Street for street name changes.

Intersection improvements

Otaio River/Hillboro Road extended seal along Hillboro Road.

## Work Programmed

Drainage

Kaiwarua Road Culvert Maintenance and replacement

Pavement Repair

Pentland Hill Road

Minor Safety Project Sealing Railway Crossing

An additional 40m of Galletleys Road over the Railway Crossing will be sealed in conjunction with the Pareora Stock Effluent Disposal Facility being constructed by Whitestone Ltd. for Transit NZ. work in progress

Seal Widening

Morven Glenavy Road (Archibald to McLeays)

Area Wide Pavement Treatment

Serpentine Valley Road near SH 82 400m

Kaiwarua Road shape and metal last 500m section

## Transportation Asset Management Plan

Following the recent Asset Valuation for depreciation purposes, the three yearly update of the Transportation AMP is in progress, and Opus International Consultants are looking to finalise a working draft by mid April 2007.

Transit NZ Submission:

Staff made the following submission on the TNZ 10 year financial forecast to meet the response date of Noon on 30 March 2007.

### ***SUBMISSION ON THE TRANSIT NEW ZEALAND DRAFT 2007/08 LAND TRANSPORT PROGRAMME AND 10-YEAR FINANCIAL FORECAST***

*The Waimate District Council thanks you for this opportunity to submit on Transit's draft State Highway 10 year Forecast.*

#### ***Stock Effluent Disposal Facilities***

*The Waimate District Council views the Pareora Stock Effluent Disposal site as an appropriate environmental solution.*

#### ***Passing Lanes***

*The Waimate District Council supports the St Andrews North Passing Lanes. It has identified that passing lanes help to reduce driver frustration and contributes to road safety improvements.*

We request consideration be given to Passing Lanes on

- SH 1, between SH 82 and SH 83 junction at Pukeuri north of Oamaru

### **Bridge Replacements**

The Waimate District Council supports the proposed Strategic Study for the Waitaki Bridges.

The bridges were constructed in 1879, their condition is not satisfactory and they are at the end useable life. These bridges provide a vital access for the residents of the Hakataramea Ward of the Waimate District.

The Waimate District Council regards these aging structures as top priority for replacement.

Council also requests replacement of the Elephant Hill Bridge on SH 82 a deficient one lane timber bridge.

Yours faithfully

Robert Moffat  
 Roading Engineer  
 Waimate District Council  
 Queen St  
 Waimate

Submitted 30-03-07

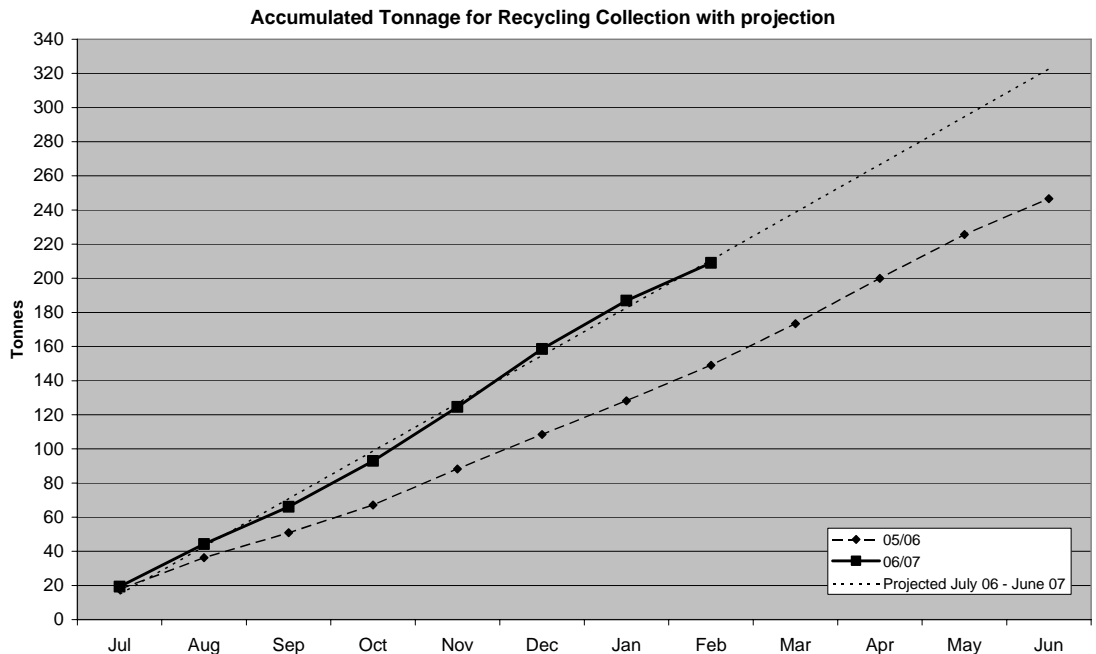
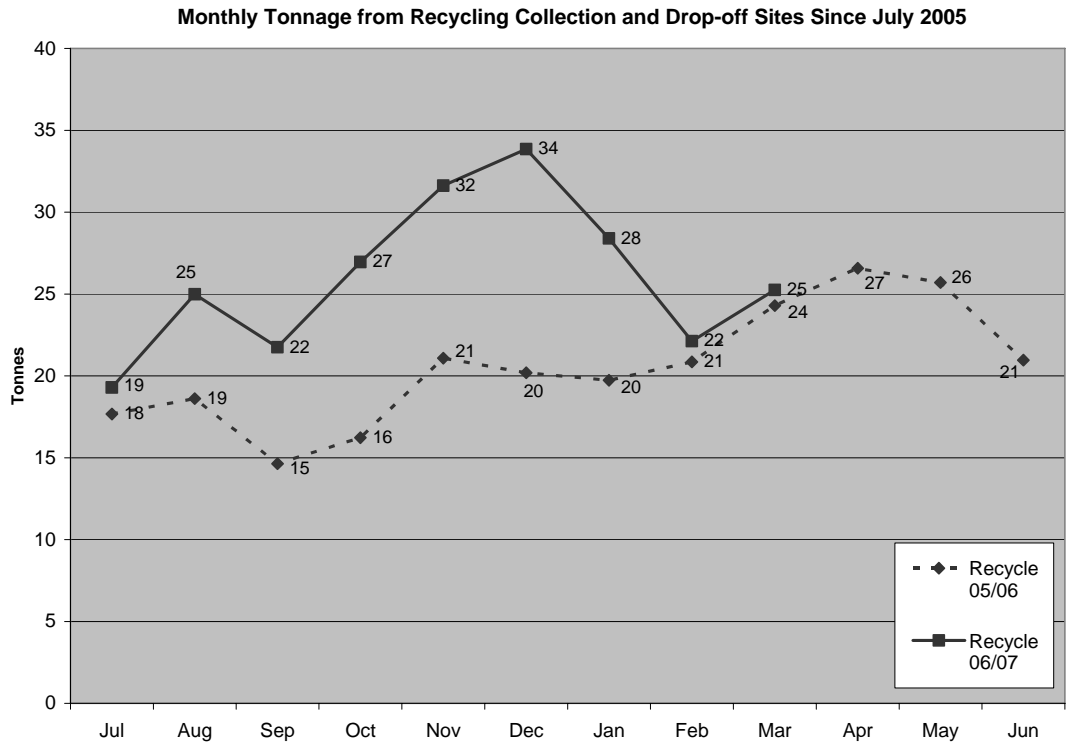
CC. Nick Bryan  
 Transport Policy Analyst  
 Environment Canterbury  
[nick.bryan@ecan.govt.nz](mailto:nick.bryan@ecan.govt.nz)

CC. Colin Knaggs  
 Regional Manager,  
 Transit NZ  
[colin.knaggs@transit.govt.nz](mailto:colin.knaggs@transit.govt.nz)

## Waste

### Monthly Tonnage for Recycling Collection

The tonnage of recyclables collected this month was 25.3 tonnes, only slightly higher than the 24.3 tonnes collected in the comparable month last year. Tonnage from the recycling collection for the first 9 months of this financial year was 234 tonnes i.e. an increase of 35% from the comparable period last financial year. A projected figure in excess of 300 tonnes is still anticipated (see charts below):



### Tonnage to Landfill

Tonnage to landfill for the month of February 2007 was 177.9 tonnes compared to 165.92 for the comparable period last year (see chart below).

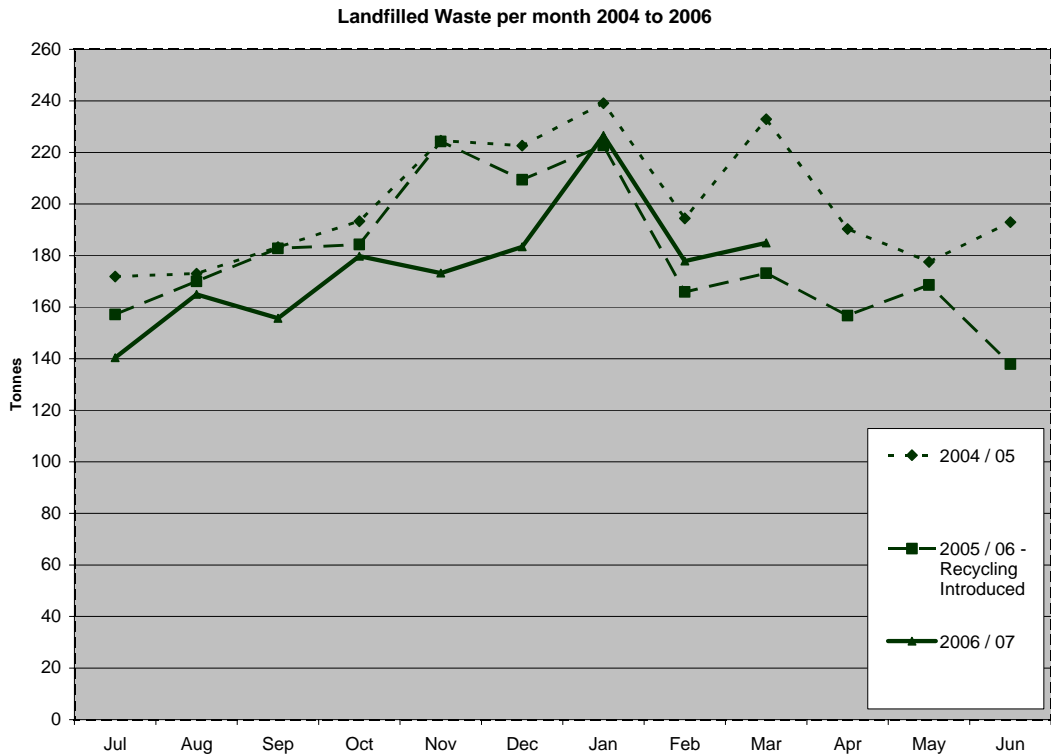
The last 3 monthly tonnages have exceeded the previous year's comparable period, reversing the recent trend of lower tonnages. It is also noted that tonnage for the recycling collection was lower than anticipated. Tonnages will be monitored to assess the effects of increased public education.

Tonnage landfilled for the 12 month period ending:

**30 June 2005**  
2,396

**31 March 2007**  
2,050

**Decrease**  
15%



### St Andrews Waste Options

At time of writing the recycling drop-off site was being transferred to its new site in Kane Lane, opposite St Andrews School.

Options for a greenwaste drop-off site are still being investigated. One possibility is that the material, once shredded, may be beneficially used locally, rather than having to be transported to another site. The cost impact of such a service would be significantly reduced, if this could be achieved.

### Glenavy Recycling Drop-off Site Established

A drop-off site for recyclables was established from the beginning of April 2007 at Fisheries Road, adjacent to the east side of the railway. This site was finalised after dialogue with the community. Signage and litter fencing will be in place as soon as practicable.

### Closed Landfill Monitoring

The annual monitoring of the District's closed landfills, as required by regional council resource consents, has been completed for this financial year. Substantial savings in lab testing costs have been achieved by using an alternative laboratory service. The reporting of results is required to be forwarded to E-Can by 30 June 2007.

### Recycling Options for Businesses

Whitehorse Recycling is presently contacting businesses with options for the collection of recyclables, at a contracted rate. The opportunity will also be taken to promote the Waste Exchange service.

## General

### Staff Activity

G Hamilton is to attend the SOLGM Seminar on Shared Services Across Local Government 16/17th April 2007.

S Unni attended a meeting of Local Authorities Water Engineers in Selwyn on 23rd March 2007, to consider a co-ordinated response to the NRRP on issues pertaining to water.

G Hamilton  
**Asset Manager** - 5<sup>th</sup> April 2007