

# How to take Readings and make Recordings for your Water Meter

## How to identify and read a water meter

### Locate your meter

Find your water meter. It is usually at the front of your property along your boundary line. Your water meter will be contained in a toby box with a blue lid like the one pictured.

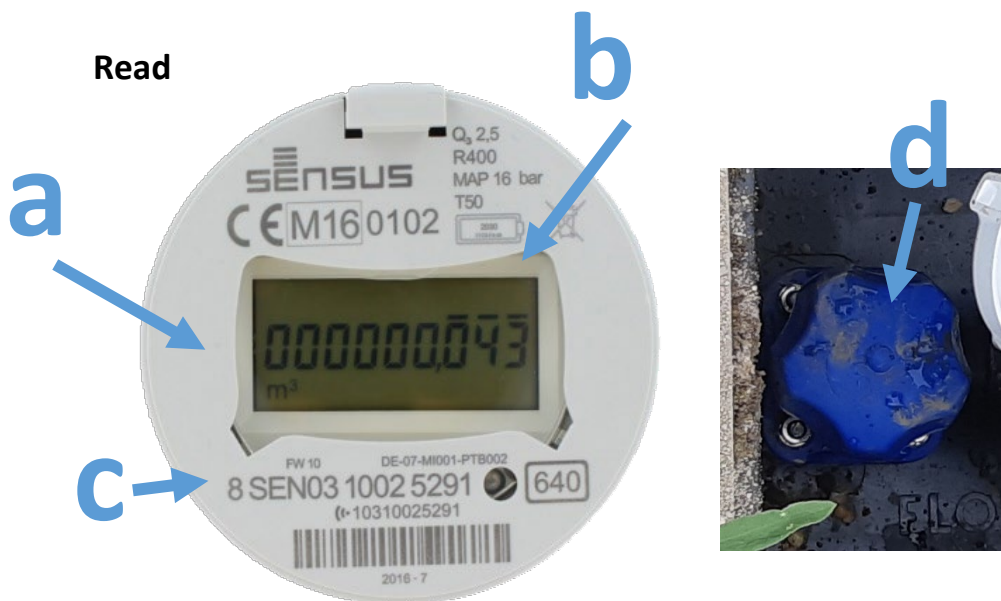


### Open

Lift the blue toby lid, you can do this with a flat head screwdriver, a strong key on your keyring or the likes. You should see the protective cover on your water meter, lift this to see the water meter.

There are 3 types of Water Meters currently in use, they may look slightly different, but reading the meter is the same process.

### Read



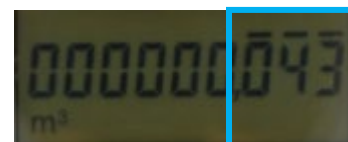
#### a. Total m<sup>3</sup>

The digits with before the decimal point that DONOT have – above them



#### b. Litres per second

The digits after the decimal point WITH – above them



#### c. Water meter ID

This is the unique serial number of the meter.

#### d. Standard gate valve

This can be used to turn off water to your property. This can be either blue or a T-bar bronze tap.

# How to make recordings and track your water use

## What is a water meter?

A water meter measures the quantity (volume) of water that passes through your toby box. Your meter works like a car odometer, recording the cumulative amount of water that has passed through the meter.

## Why Read Your Meter?

Reading your water meter regularly will help you understand how you are consuming water. You can determine how much water you typically consume over a period of time by keeping a simple log. You can also determine the amount of water used over the course of an event, such as during the dryer summer months. Finally, you can detect water flowing that you are not intending to use, such as a leak. Checking readings periodically will help you to catch any problems. Regular reading of your household meters will make you a more informed consumer.

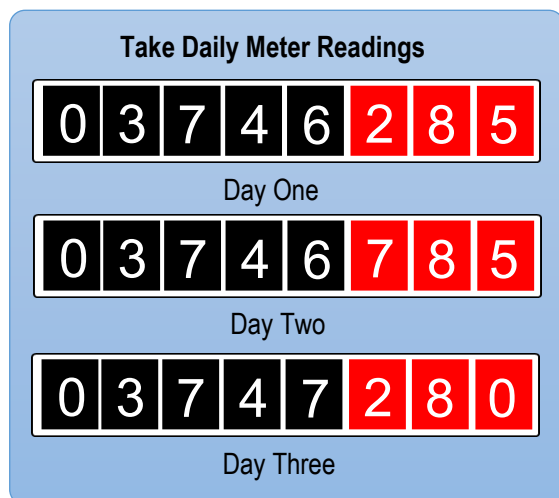
## How much water should I be using?

The water allocation for your metered property is 200m<sup>3</sup> every 6 months. Which is approximately up to 1.10m<sup>3</sup> per day or 1100 liters per day.

## How do I track my water usage?

You can track your water usage by keeping a simple log with a date and time and making regular readings and completing some simple math's.

See below example (Digits indicated in red represent Liters and after the decimal point marked with – above them):



Simply deduct your previous Reading from current Reading

Also if you want keep a running total you can add the differences as you go

Date	Time	Reading	Water Usage m <sup>3</sup>	Running Total m <sup>3</sup>
01/09/2021	9:30 am	3746,285		
02/09/2021	5:45 pm	3746,785	0.500	0.500
03/09/2021	8:00 AM	3747,280	0.495	0.995

For greater understanding of daily usage, you can divide the difference between readings by the amount of days to get an average daily usage