

# How to find water leaks

## Simple and Advance Method

### How to identify and read a water meter

#### Locate your meter

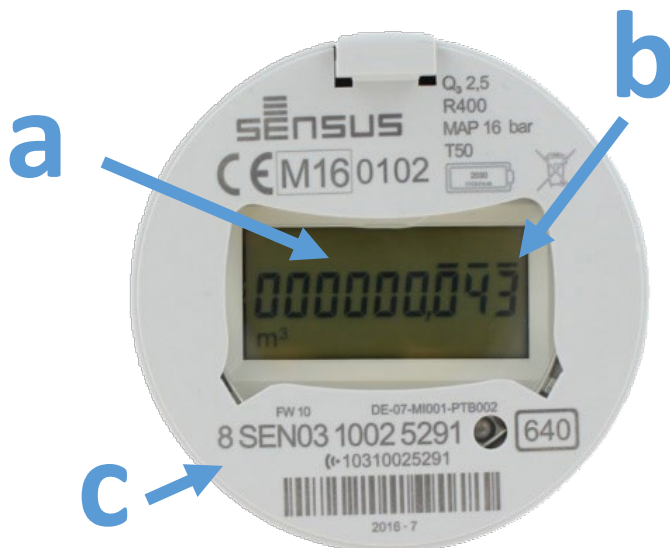
Find your water meter. It is usually at the front of your property along your boundary line. Your water meter will be contained in a toby box with a blue lid like the one pictured.



#### Open

Lift the blue toby lid and you should see the protective cover on your water meter, lift this to see the water meter.

#### Read



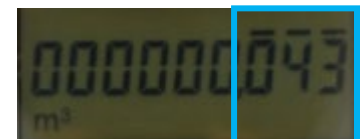
#### a. Total m3

The digits with before the decimal point that DONOT have – above them



#### b. Liters per second

The digits after the decimal point WITH – above them



#### c. Water meter ID

This is the unique serial number of the meter.

#### d. Standard gate valve

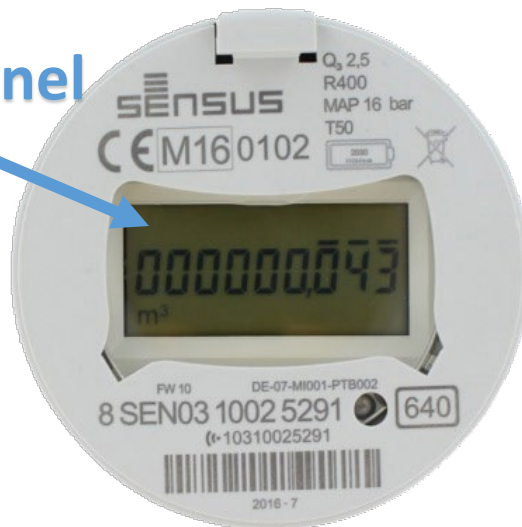
This can be used to turn off water to your property. This can be either blue or a T-bar bronze tap.

# How to check if you have a water leak – Simple Method

## How to read your meter to check for a leak

- **Find your water meter** - You may need to remove leaves and debris, or flip up the protective cover to read the water meter. When you locate your water meter you should see water in use by seeing that the numbers are clocking over.  
**Note:** Do not turn off your Shut Off Valve this is what connects water to your property and we want to allow water to run so we can test the water usage.
- **Turn off all Taps** - Turn off all your taps on the property and don't use any water during your test.
- **Check the display panel** - If you see the numbers continuing to clock over, you have a leak.

Display Panel



## How to check if you have a water leak – Advanced Method

### Before you check for leaks

This simple leak test can help you identify hidden leaks on your property. Before you start, here are some important tips to remember:

- Pick a time when no water will be used for at least two hours – overnight is a good time.
- During the test, don't use any water. This includes flushing toilets, running taps or using the dishwasher or washing machine.
- Do not turn off the tap on the meter during the test – you need to be able to see if the numbers still clock over while you are not using water, as this helps indicate a leak.
- Your water meter is usually outside your property boundary in the ground in a plastic box with a blue lid.

### How to read your meter to check for a leak

- **Find your water meter.** You may need to remove leaves and debris, and flip up the protective cover to read the water meter.
- **Read the numbers from left to right, and note them down.** This is your first reading. Wait for at least two hours (or overnight) and then read your water meter again. Remember to replace the water meter lid securely once you have done this.
- **Compare the two readings.** If the numbers are different, you have a water leak. You may need to call a registered plumber to check further.

Please note: the digits indicated in red are after the decimal point & have – above them. The example below shows that about 25 litres of water were used during the night. This indicates a leak.



Previous night's reading  
10:00 pm



Early Morning reading  
7:00 am

### Whose responsibility is it to fix a water leak?

If the leak is on your property, then it is your responsibility. Council is responsible for leaks either on your property boundary or outside your boundary. If you suspect or have noted a leak outside your boundary, contact Council.

