



Draft Glenavy Recreation Reserve Management Plan

Consultation Document

Submissions close 12pm, Wednesday 18 October 2023



Waimate
District Council



Introduction

This consultation document has been written to give an overview of the process that was followed in developing the Draft Glenavy Recreation Reserve Management Plan (draft RMP) along with key information in the plan.

We are seeking submissions on the draft RMP from 17 August 2023 until 12pm on 18 October 2023.

The purpose of this consultation document is to:

- Explain the need for a draft RMP
- Identify the aim, objectives and proposed concept plans
- Provide FAQs on key areas of interest
- Explain how to make a submission on the draft RMP.

This consultation document does not provide a comprehensive rundown of the draft RMP. Please read the draft RMP in full before making a submission.

Summary of the draft RMP

The draft RMP is a high-level policy document rather than a detailed operational plan.

The purpose of the draft RMP is to provide Waimate District Council with a clear framework for the day-to-day management and decision-making for the Glenavy Recreation Reserve over the next 10 years.

Council is required to comply with the objectives and policies in the draft RMP, which will guide the reserve's development, management, protection, operation and public use.

Background

The Glenavy Recreation Reserve is spread across 23.13 hectares and was vested in the Waimate District Council in 1991 for recreational purposes. Until recently it was a forestry block planted out in pine trees for commercial gain.

In 2009, a walking track was developed from the car park area to the (then narrow) creek bed and onto the other side of the reserve. This was until the irrigation scheme in the area brought large volumes of water and widened the channel mouth. This eroded the banks making them impassable.

Waimate Trackways Incorporated (Trackways) discussed the construction of a bridge as a solution which was found untenable, but a proposal for a track to run along the top of the bank connecting to Ruane Street was accepted. Trackways were involved in the development, construction and maintenance of tracks within the reserve. In 2015, they got approval from Council to extend the walking track by 900 metres. The extension was well received by the community and used for walking, cycling and horse trekking. A local member of Trackways coordinated the planting of native trees along the water's edge and bank with funding obtained from Meridian Energy.

Council engaged a contractor to manage and maintain the pine plantation. In early 2022, 4.2 hectares of the pine plantation was felled giving the community an opportunity to decide the future of the reserve.

On 27 October 2022, Council met with members of the Glenavy community to discuss whether pine trees should be reinstated or other options for the reserve should be investigated. Following that meeting, the Glenavy Reserve Community Planning Group (the planning group) was established comprising members of the Glenavy community and Council. Council's parks and reserves manager submitted recommendations from the planning group to Council on 31 January 2023 to redevelop 4.2 hectares of the reserve that would allow recreational activity for the benefit of the Glenavy community and other visitors. Following Council's approval, work began towards implementing the recommendations in the report.

The redevelopment plan was broken into two stages. Stage one started with the formation of the planning group and ended with an opening ceremony for the public where they also had an opportunity to share their views about stage two.

REDEVELOPMENT TIMELINE

OCTOBER
2022



Community planning group set-up

The Glenavy Reserve Community Planning Group proposed to Council to develop the site back into a reserve (not a forestry plantation). A commitment of \$104,000 was made by Council.

DECEMBER
2022



Walking tracks reinstated

The walking tracks were reinstated and connected by creating a loop track within the reserve. The entrance across the road from the village has been reinstated for pedestrian access.

FEBRUARY
2023



Bike park developed

The planning group decided that the aim for the reserve is to protect and enhance the environment of the reserve to create safe recreation spaces that benefit the community and those visiting the area. It was decided that a pocket park (bike park) be developed inside the south entrance gate, creating a welcoming space. Other spaces will be created after the site has been planted out.

MARCH
2023



Fencing and gates

Fencing has been reinstated with gates now at the north end of the track (next to SH1) and the south entrance (next to SH1, above the car park).

APRIL
2023



Weed management

Due to the nature of the site, specific trees and native shrubs have been selected with a combination of Totara and Wellingtonia. They will be planted alongside the walking tracks and on the banks. Planting at the new entrance is yet to be decided. Spraying has been completed and planting is to commence in July/August 2023.

JULY
2023



Formal opening

Celebrating the completion of stage one with the planting of a Southern Rata.

Stage two commenced with the creation of the draft RMP for public consultation to capture community feedback and ideas for the reserve.

The consultation will help in creating an action plan to implement the aim and objectives for the reserve.

Reason for the plan

Council is responsible for preparing policies for the management of the reserves it controls. The Reserves Act 1977 mandates Council to prepare reserve management plans for reserves within the Waimate District outlining the general intentions for their use, development, maintenance, protection and preservation.

Although the Glenavy Recreation Reserve is currently covered under the 'General Reserve Policies for Waimate District – 2019', the increase in recreational activity within the reserve will require a reserve management

plan as mandated under section 41 of the Reserves Act 1977. Section 41 further requires Council to conduct public consultation and gather community input into the draft reserve management plan.

Council wants to ensure that development and management of the reserve involves community participation. Through consultation, the aspirations and requests of the community will be identified and considered. The draft RMP will reflect the collective vision of the community for the Glenavy Recreation Reserve over the next 10 years.

Aim and objectives

The overall aim of the reserve as recommended by the Glenavy Reserve Community Planning Group:

“To protect and enhance the environment of the reserve and create safe recreation spaces that will benefit the whole community and those visiting the area.”



The planning group identified three key objectives:

- 1 Protect the character and individuality of the reserve, ensuring the reserve is a place that the community can be proud of.
- 2 Provide a variety of spaces for fun outdoor recreation activities that will attract all age groups to the site.
- 3 Select a variety of plant and tree species that reflect the heritage of our local tangata whenua and the present cultural diversity of the area, as well as attract birds, insects, etc. back to the reserve.

Concept plans

Concept plans have been developed for the reserve in line with the aim and objectives recommended by the planning group. The following concepts cover planting plans and ideas for recreational and leisure activities.

Proposed adventure play spaces

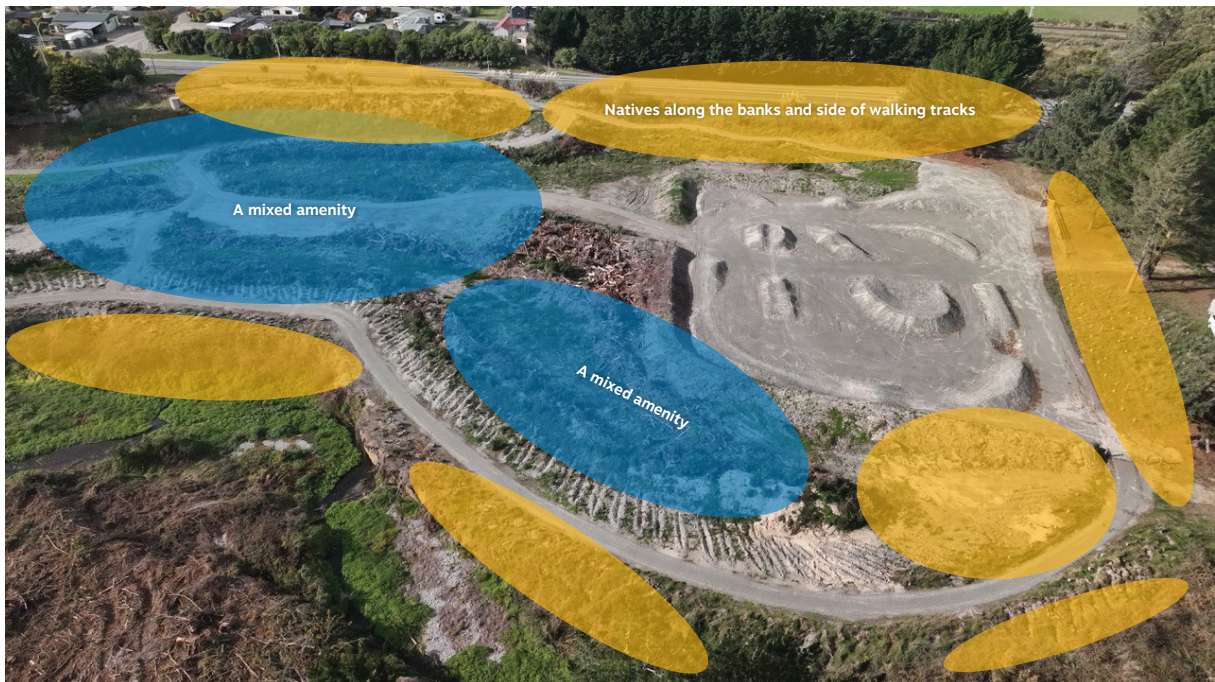
Council has already developed a pocket park (bike park) within the reserve. Two adventure play spaces have been identified with an opportunity for the community to give ideas and suggestions for recreational and leisure activities within the spaces.



Proposed planting plan

It is proposed to plant a mix of native trees and exotic trees. Out of the available 4.2 hectares, 3 hectares to be planted with a variety of tree

species and 0.2 hectares to be planted with native trees. Native trees to be planted along the banks and walking tracks.



Frequently asked questions

Why do we need a mix of native and exotic trees?

The cost for maintaining native trees is higher when compared to exotic trees. Certain parts of the reserve have soil types that are not conducive for native trees and coupled with rainfall pose a considerable risk to natives. Exotic trees grow faster than native trees.

Why aren't the pines being replanted?

The Glenavy Reserve Community Planning Group recommended that pines should not

be replanted. Pines pose a significant risk to recreational spaces, especially the walking tracks, which are damaged when pine trees are felled.

Is the public allowed to take wood from felled trees within the reserve?

No. The Waimate District Consolidated Bylaw 2018, chapter 7, covering parks and reserves, prohibits any person from taking wood from felled trees within the reserve.

Supporting information

The following document is available on the Current Consultations page on Council's website or a hard copy can be read at the library:

- Draft Glenavy Recreation Reserve Management Plan

Key dates



Submissions open:	Thursday 17 August 2023
Submissions close:	12pm on Wednesday 18 October 2023
Submission hearings:	Tuesday 21 November 2023
Decision made by Council:	Tuesday 21 November 2023
Notification of decision:	Wednesday 22 November 2023

How do I make a submission?

All submissions must be received by **12pm on Wednesday 18 October 2023**.

- **Online:** waimatedc.govt.nz/current-consultations
- **Email:** Scan and email your submission to submission@waimatedc.govt.nz ('Submission: Draft Glenavy Recreation Reserve Management Plan' in subject field)
- **Post:** Submission: Draft Glenavy Recreation Reserve Management Plan, Waimate District Council, PO Box 122, Waimate 7960
- **Deliver:** To Council reception, 125 Queen Street, Waimate



Submission Form

Draft Glenavy Recreation Reserve Management Plan



Personal details

First name: _____ Last name: _____

Organisation: _____

Postal address: _____

Home phone: _____ Mobile: _____

Email: _____

Privacy

A full copy of all submissions will be made publicly available.
Would you like your contact details withheld? Yes No

Speak to your submission

Do you wish to speak to your submission at the
Submission Hearing on Tuesday 21 November 2023? Yes No

If yes, please ensure your daytime phone number is recorded above so we can contact you to arrange a suitable time.

Your feedback

We strongly encourage you to read the Draft Glenavy Recreation Reserve Management Plan in full before answering the following questions.

Please use additional paper if needed.

1. **What is your overall opinion of the Draft Glenavy Recreation Reserve Management Plan, and why?** Support Do not support

Tell us why: _____

Please turn over

2. What do you think of the aim and objectives in the Draft Glenavy Recreation Reserve Management Plan, and why? Support Do not support

Tell us why: _____

3. What do you think of the concept plans, and why? Support Do not support

Tell us why: _____

4. Do you have any ideas or suggestions for recreational and leisure activities within the reserve that could be incorporated in the action plan?

Comments: _____

5. Do you have any other feedback on the Draft Glenavy Recreation Reserve Management Plan?

Comments: _____

**Thank you for your submission.
All submissions must be received by 12pm on Wednesday 18 October 2023.**



125 Queen Street, Waimate 7924
PO Box 122, Waimate 7960
Phone: 03 689 0000
E-mail: council@waimatedc.govt.nz
Web: waimatedc.govt.nz

